



User Manual

# Digital Kitchen Scale

**Model:** EK8060



## Questions or Concerns?

Mon-Fri, 9:00 am-5:00 pm PST/PDT  
support@etekcity.com • (855) 686-3835

# Thank you for purchasing the Digital Kitchen Scale by Etekcity.

If you have any questions or concerns, please reach out to our helpful Customer Support Team at **[support@etekcity.com](mailto:support@etekcity.com)**. We hope you enjoy your new kitchen scale!

# Table of Contents

|                              |          |   |           |
|------------------------------|----------|---|-----------|
| Package Contents             | <b>3</b> | Replacing the Batteries                         | <b>8</b>  |
| Specifications               | <b>3</b> | This product contains a coin/<br>Button battery | <b>9</b>  |
| Important Safety Information | <b>4</b> | Troubleshooting                                 | <b>10</b> |
| Function Diagram             | <b>5</b> | Warranty Information                            | <b>11</b> |
| Symbols                      | <b>5</b> | Customer Support                                | <b>13</b> |
| Using Your Scale             | <b>6</b> |   |           |
| • General Operation          | <b>6</b> |   |           |
| • Zero / Tare Function       | <b>7</b> |   |           |
| • Unit Conversion            | <b>8</b> |   |           |
| • Automatic Power Off        | <b>8</b> |   |           |
| • Manual Power Off           | <b>8</b> |   |           |

## Package Contents

1 x Digital Kitchen Scale  
2 x 3V CR 2032 Batteries (Pre-Installed)  
1 x Quick Start Guide

## Specifications

|                        |   |
|------------------------|---|
| <b>Weight Capacity</b> | 176 oz / 11 lb / 5000 g / 5000 mL                     |
| <b>Units</b>           | oz / lb:oz / fl'oz (water/milk) / g / mL (water/milk) |
| <b>Increments</b>      | 0.04 oz / 1 g / 1 mL                                  |
| <b>Auto-Off</b>        | 180 seconds   |
| <b>Battery</b>         | 2 x 3V CR2032 batteries                               |
| <b>Dimensions</b>      | 8.3 x 6.3 x 0.6 in / 21 x 16 x 1.6 cm                 |

# READ AND SAVE THESE INSTRUCTIONS


## Important Safety Information

**To avoid damage to this scale, please read and follow all instructions and safety guidelines in this manual.**

### Scale

- **Always** place the scale on a hard, dry, and flat surface before measurement in order to ensure accuracy.
- **Do not** exceed the 11 lb / 5000 g weight capacity as it will damage the scale. An error indicator will appear on the LCD display if the limit is exceeded.
- **Do not** immerse the scale in water or any liquid. If liquid is spilled on the digital display or buttons, immediately wipe the scale dry with a soft cloth to avoid internal damage.
- Handle with care. This scale is not intended for commercial or heavy-duty use.
- Keep the scale in a cool, dry place. Avoid exposure to damp environments or extreme temperatures.
- Household use **only**.

### Batteries

- **Do not** mix new and old batteries.
- If the low battery indicator “” appears on the display, replace the batteries.
- If the scale is not in use for an extended period of time, remove the batteries to conserve battery life and extend the lifetime of the scale.

# Function Diagram

**A.** Unit Selection Button

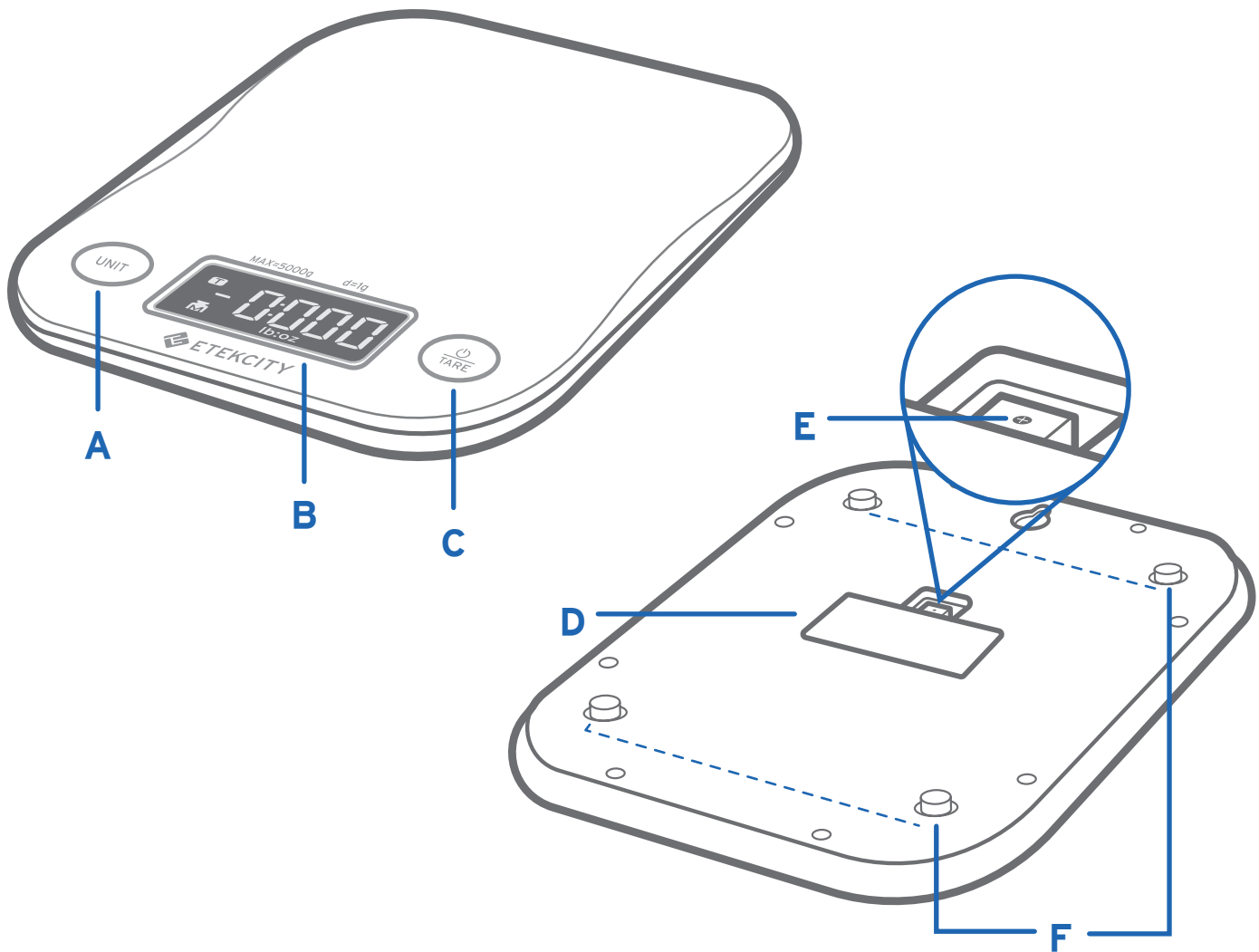
**B.** LCD Display

**C.** Power/Tare Button

**D.** Battery Compartment

**E.** Screw

**F.** Anti-Skid Pads



## Symbols



Solids



Water (Liquid)




Milk (Liquid)

# Using Your Scale

## Note:





- For accurate results, **always** place the scale on a hard, dry, flat surface, and keep the scale away from dirt, dust, vibrations, wind, air currents, and electromagnetic interference.
- When you turn on the scale, choose units, or use the tare function, wait for the display to read **000** before measuring.
- The batteries are pre-installed in the scale. Turn the scale over and pull the **plastic strip** out from the battery compartment.

## General Operation

1. Place the scale on a hard, flat, level surface.
2. Press  **TARE** to turn on the scale. Make sure the display reads **000**. Press **UNIT** to select your desired measuring unit, which will show at the bottom of the display.
3. Place your item on the scale.
4. Wait for the reading on the display to stabilize.

## Zero / Tare Function

Whenever you measure items inside a container, you can use the tare function to remove the container's weight from the final measurement.

1. Press  **TARE** to turn on the scale. Make sure the display reads **000**. If the screen does not display **000** automatically, press  **TARE** to adjust to zero.
2. Place the container on the center of the scale.
3. Wait for the reading on the display to stabilize. The display will show the container's weight.
4. Press  **TARE** to tare the weight of the container. The screen should now display **000**.
5. Place the liquid or items into the container. The scale will measure the contents without including the weight of the container. *[Figure 1.1]*
6. When you're done, reset the scale by removing all weight and pressing  **TARE** again.

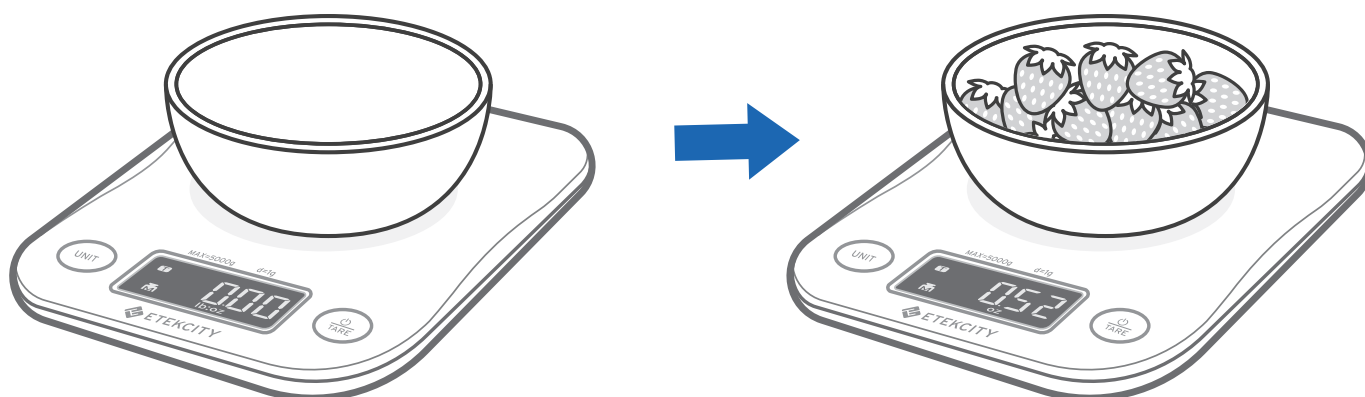


Figure 1.1


## Unit Conversion

To change the unit of measurement, press **UNIT** until the display shows the desired unit of measurement.

## Automatic Power Off

To save battery power, the scale will automatically power off after 180 seconds of inactivity.

## Manual Power Off

Press and hold  **TARE** for 2 seconds to turn off the scale.

## Replacing the Batteries

1. Turn the scale over and use a screwdriver to loosen the screw of the battery compartment.
2. Take out the used batteries and replace them with 2 new 3V CR2032 batteries.
3. Replace the battery compartment cover and screw it shut.



## This product contains a coin/Button battery

### KEEP OUT OF REACH OF CHILDREN

Swallowing can lead to chemical burns, perforation of soft tissue, and death. Severe burns can occur within 2 hours of ingestion. Seek medical attention immediately.

- Place sticky tape around both sides of the battery and dispose of it immediately in an outside bin or recycle safely
- Store spare batteries securely
- recycling units emptied on a regular basis
- use of opaque containers - to keep the batteries out of view;

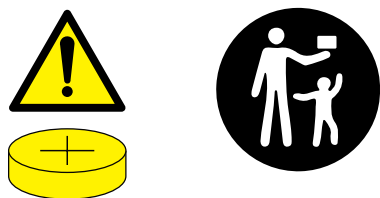
Unfortunately, it is not obvious when a button or coin battery is stuck in a child's oesophagus (food pipe). The child might:

- cough, gag or drool a lot;
- appear to have a stomach upset or a virus;
- be sick;
- point to their throat or stomach;
- have a pain in their abdomen, chest or throat;
- be tired or lethargic;
- be quieter or more clingy than usual or otherwise "not themselves";
- lose their appetite or have a reduced appetite;
- not want to eat solid food / be unable to eat solid food.

These sorts of symptoms vary or fluctuate, with the pain increasing and then subsiding.

A specific symptom to button and coin battery ingestion is vomiting fresh (bright red) blood. If the child does this seek immediate medical help.

The lack of clear symptoms is why it is important to be vigilant with "flat" or spare button or coin batteries in the home and the products that contain them.



# Troubleshooting

| Problem                        | Possible Solution  |
|--------------------------------|--|
| <b>Scale does not turn on.</b> | Open the battery compartment cover and remove the plastic strip.   |
|                                | Replace the batteries (see page 8).  |
|                                | Make sure batteries are inserted under the correct polarity as marked in the battery compartment.                          |
| <b>Reading is inaccurate.</b>  | Place the scale on a hard, dry, and flat surface.  |
|                                | Make sure the screen displays <b>000</b> before measuring (see <b>Zero / Tare Function</b> , page 7).                      |
|                                | Remove the batteries for 45 seconds, then replace them to reset the scale.   |
| <b>Display shows EEEE</b>      | Item is too heavy. Remove item from scale to protect its weight sensors. Use a different scale with a higher weight range. |
| <b>Display shows Err</b>       | Calibration error. Turn the scale off and on again. Avoid moving the scale while measuring.                                |
| <b>Display shows Lo</b>        | Battery power is low. Replace the batteries (see page 8).  |

**If your problem is not listed**, please contact **Customer Support** (see page 13).

# Warranty Information

|   |                              |
|---|------------------------------|
| <b>Product</b>  | <i>Digital Kitchen Scale</i> |
| <b>Model</b>  | <i>EK8060</i>                |
| <b>Default Warranty Period</b>  | <i>2 years</i>               |
| For your own reference, we strongly recommend that you record your order ID and date of purchase. |                              |

## Terms & Policy

Etekcitey Corporation (“Etekcitey”) warrants this product to the original purchaser to be free from defects in material and workmanship, under normal use and conditions, for a period of 2 years from the date of original purchase.

Etekcitey agrees, at our option during the warranty period, to repair any defect in material or workmanship or furnish an equal product in exchange without charge, subject to verification of the defect or malfunction and proof of the date of purchase.

There is no other express warranty. This warranty does not apply:

- If the product has been modified from its original condition;
- If the product has not been used in accordance with directions and instructions in the user manual;
- To damages or defects caused by accident, abuse, misuse or improper or inadequate maintenance;
- To damages or defects caused by service or repair of the product performed by an unauthorized service provider or by anyone other than Etekcitey;
- To damages or defects occurring during commercial use, rental use, or any use for which the product is not intended;
- To damages or defects exceeding the cost of the product.

Etekcitey will not be liable for indirect, incidental, or consequential damages in connection with the use of the product covered by this warranty. This warranty extends only to the original consumer purchaser of the product and is not transferable to any subsequent owner of the product regardless of whether the product is transferred during the specified term of the warranty.

This warranty does not extend to products purchased from unauthorized sellers. Etekcitey's warranty extends only to products purchased from authorized sellers that are subject to Etekcitey's quality controls and have agreed to follow its quality controls.

All implied warranties are limited to the period of this limited warranty.

This warranty gives you specific legal rights and you may also have other rights which vary from state to state. Some states do not allow the exclusion or limitation of incidental or consequential damages, so the above limitation or exclusion may not apply to you.

If you discover that your product is defective within the specified warranty period, please contact Customer Support via **support@etekcity.com**. **DO NOT** dispose of your product before contacting us. Once our Customer Support Team has approved your request, please return the product with a copy of the invoice and order ID.

Every Etekcitey product automatically includes a 2-year warranty. To make the customer support process quick and easy, register your product online at [www.etekcity.com/warranty](http://www.etekcity.com/warranty).

This warranty is made by:

Etekcitey Corporation  
1202 N. Miller St., Suite A  
Anaheim, CA 92806, USA

**CAN ICES-003 (B) / NMB-003 (B).**

# Customer Support

If you have any questions or concerns about your new product, please contact our helpful Customer Support Team.

## CUSTOMER SUPPORT

### **Etekcitey Corporation**

1202 N. Miller St., Suite A  
Anaheim, CA 92806

**Email:** [support@etekcity.com](mailto:support@etekcity.com)

## SUPPORT HOURS

**Toll-Free:** (855) 686-3835  
Mon-Fri, 9:00 am-5:00 pm PST/PDT

*\*Please have your order invoice and order ID ready before contacting Customer Support.*



