



User Manual

Digital Kitchen Scale

Model: EK7090



Questions or Concerns?

Mon-Fri, 9:00 am-5:00 pm PST/PDT
support@etekcity.com • (855) 686-3835

Thank you for purchasing the Digital Kitchen Scale by Etekcity.

If you have any questions or concerns, please reach out to our helpful Customer Support Team at **support@etekcity.com**.
We hope you enjoy your new kitchen scale!

Table of Contents

Specifications	4
Important Safety Information	5
Function Diagram	6
Before First Use	7
Using Your Scale	8
• General Operation	8
• Unit Conversion	8
• Automatic Power Off	8
• Manual Power Off	9
• Zero / Tare Function	9
Replacing the Batteries	10
Troubleshooting	11
Warranty Information	12
Customer Support	14

Specifications

Weight Capacity	176 oz / 11 lb / 5000 g / 5000 mL
Units	oz / lb:oz / fl oz (water/milk) / g / mL (water/milk)
Increments	0.05 oz / 1 g / 1 mL
Auto-Off	3 minutes
Battery	3 x 1.5V AAA batteries
Dimensions	7.9 x 5.6 x 0.5 in / 200 x 141 x 12.5 mm



READ AND SAVE THESE INSTRUCTIONS

Important Safety Information

To avoid damage to this scale, please read and follow all instructions and safety guidelines in this manual.

Scale

- **Do not** exceed the 11 lb / 5000 g weight capacity as it will damage the scale. An error indicator will appear on the LED display if the limit is exceeded.
- **Do not** immerse the scale in water or any liquid. If liquid is spilled on the digital display or buttons, immediately wipe the scale clean with a soft cloth to avoid internal damage.
- Handle with care. This scale is not intended for commercial or heavy-duty use.
- Keep the scale in a cool, dry place. Avoid exposure to damp environments or extreme temperatures.
- Household use **only**.

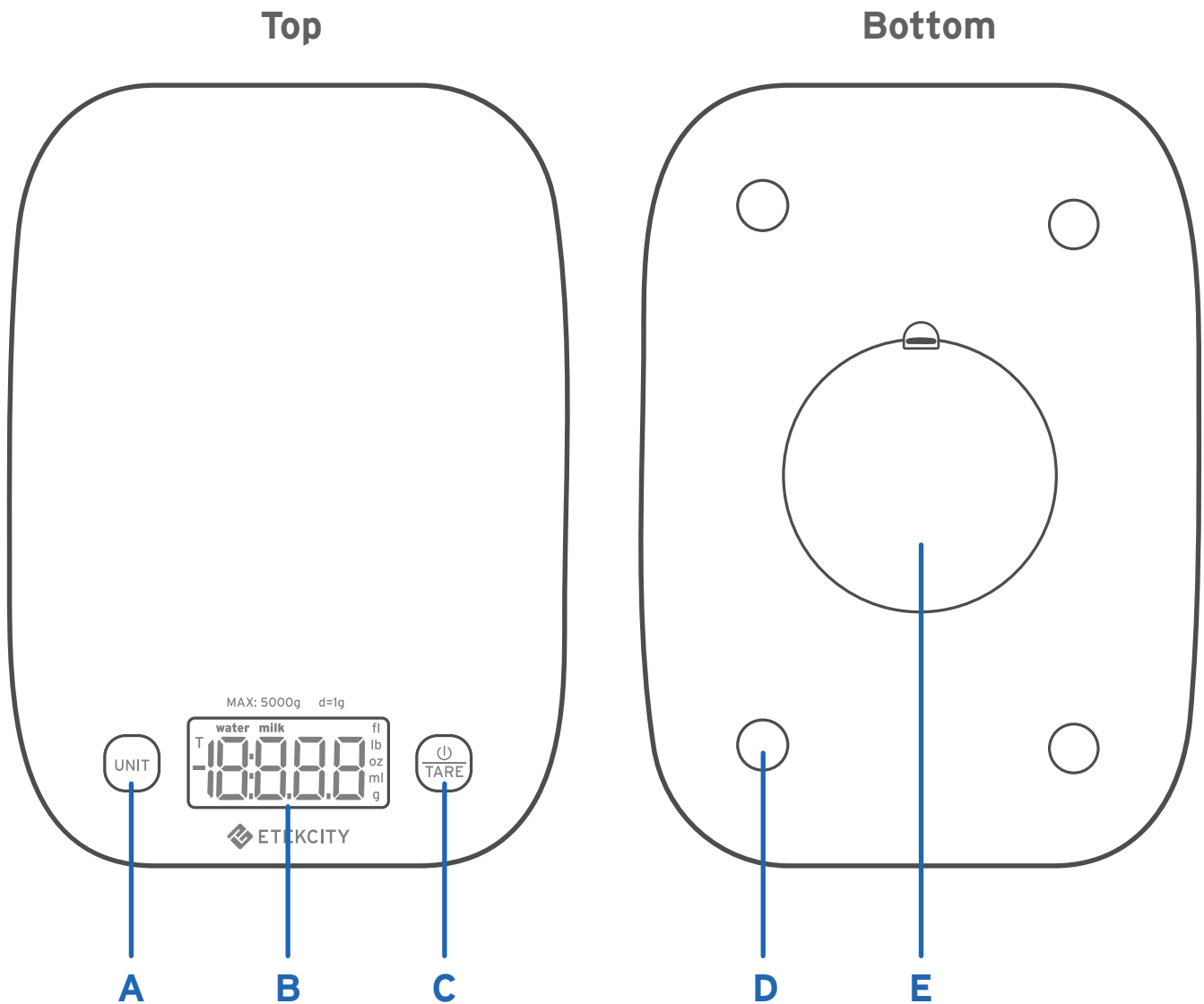
Batteries

- **Do not** mix new and old batteries.
- If the low battery indicator (“Lo”) appears on the display, replace the batteries.
- If the scale is not in use for an extended period of time, remove the batteries to conserve battery life and extend the lifetime of the scale.




Function Diagram

- A. Unit Selection Button
- B. LED Display
- C. Power/Tare Button
- D. Anti-Skid Pads
- E. Battery Compartment



Before First Use

The batteries are pre-installed in the scale.

1. Turn the scale over and open the battery compartment.
2. Remove the plastic strip from the battery compartment.
[**Figure 1.1**]
3. Replace the battery compartment cover.
4. Turn the scale over again and place on a hard, dry, flat surface.
5. Tap  **TARE** to turn on the scale.

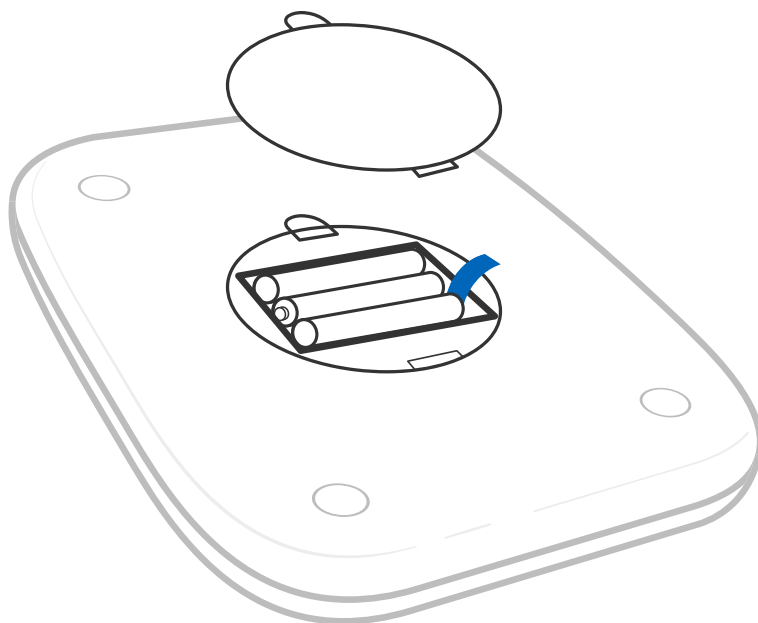


Figure 1.1




Using Your Scale

Note:

- For accurate results, always place the scale on a hard, dry, flat surface, and keep the scale away from dirt, dust, vibrations, wind, air currents, and electromagnetic interference.
- When you turn on the scale, choose units, or use the tare function, wait for the scale to read “000” again before measuring.

General Operation

1. Place the scale on a hard, flat, level surface for measurement.
2. Tap  to turn on the scale. Make sure the scale shows “000”. Tap **UNIT** to select your desired measuring unit, which will show on the right of the display.
3. Place your item on the scale.
4. Wait for the reading on the display to stabilize.

Unit Conversion

To change the unit of measurement, tap **UNIT** until the display shows the desired unit of measurement.

Automatic Power Off

To save battery power, the scale will automatically power off after 180 seconds of inactivity.







Manual Power Off

Press and hold  for 2 seconds to turn off the scale.

Zero / Tare Function

Whenever you measure items inside a container, you can use the tare function to remove the container's weight from the final measurement.

1. Tap  to turn on the scale. Make sure the scale shows "000". If the screen does not display "000" automatically, tap  to auto-adjust to zero.
2. Place the container on the center of the scale.
3. Wait for the reading on display to stabilize. The screen will display the container's weight.
4. Tap  to tare the weight of the container. The screen should now display "000".
5. Place the item in the container. The scale will measure the liquid or items, without including the weight of the bowl. [Figure 2.1]
6. When you're done, reset the scale by removing all weight and tapping  again.

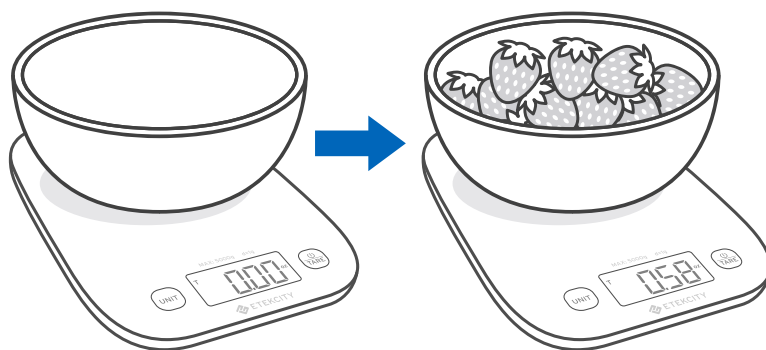


Figure 2.1



Replacing the Batteries

1. Turn the scale over and open the battery compartment.
2. Take out the used batteries and replace them with 3 new 1.5V AAA batteries.
3. Replace the battery compartment cover.



Troubleshooting

Problem	Possible Cause
Scale does not turn on.	Open the battery compartment cover and remove the plastic strip.
	Replace the batteries (see page 10).
	Make sure batteries are inserted under the correct polarity as marked on battery compartment.
Reading is inaccurate.	Place scale on a level surface.
	Make sure the screen displays “000” before measuring (see Zero / Tare Function , page 9).
	Remove the batteries for 45 seconds, then replace them to reset the scale.
Display shows “Err”	Item is too heavy. Remove item from scale to protect its weight sensors. Use a different scale with a higher weight range.
Display shows “unSt”	Turn the scale off and on again. Avoid moving the scale while measuring.
Display shows “Lo”	Battery power is low. Replace the batteries (see page 10).

If your problem is not listed, please contact **Customer Support** (see page 14).



Warranty Information

Product	<i>Digital Kitchen Scale</i>
Model	<i>EK7090</i>
Default Warranty Period	<i>2 years</i>
For your own reference, we strongly recommend that you record your order ID and date of purchase.	

Terms & Policy

Etekcitey Corporation (“Etekcitey”) warrants this product to the original purchaser to be free from defects in material and workmanship, under normal use and conditions, for a period of 2 years from the date of original purchase.

Etekcitey agrees, at our option during the warranty period, to repair any defect in material or workmanship or furnish an equal product in exchange without charge, subject to verification of the defect or malfunction and proof of the date of purchase.

There is no other express warranty. This warranty does not apply:

- If the product has been modified from its original condition;
- If the product has not been used in accordance with directions and instructions in the user manual;
- To damages or defects caused by accident, abuse, misuse or improper or inadequate maintenance;
- To damages or defects caused by service or repair of the product performed by an unauthorized service provider or by anyone other than Etekcitey;
- To damages or defects occurring during commercial use, rental use, or any use for which the product is not intended;
- To damages or defects exceeding the cost of the product.

Etekcitey will not be liable for indirect, incidental, or consequential damages in connection with the use of the product covered by this warranty.

This warranty extends only to the original consumer purchaser of the product and is not transferable to any subsequent owner of the product regardless of whether the product is transferred during the specified term of the warranty.

This warranty does not extend to products purchased from unauthorized sellers. Etekcitey's warranty extends only to products purchased from authorized sellers that are subject to Etekcitey's quality controls and have agreed to follow its quality controls.

All implied warranties are limited to the period of this limited warranty.

This warranty gives you specific legal rights and you may also have other rights which vary from state to state. Some states do not allow the exclusion or limitation of incidental or consequential damages, so the above limitation or exclusion may not apply to you.

If you discover that your product is defective within the specified warranty period, please contact Customer Support via **support@etekcity.com**. **DO NOT** dispose of your product before contacting us. Once our Customer Support Team has approved your request, please return the product with a copy of the invoice and order ID.

Every Etekcitey product automatically includes a 2-year warranty. To make the customer support process quick and easy, register your product online at www.etekcity.com/warranty.

This warranty is made by:

Etekcitey Corporation
1202 N. Miller St., Suite A
Anaheim, CA 92806



Customer Support

If you encounter any issues or have any questions about your new product, please contact our helpful Customer Support Team. Your satisfaction is our goal!

CUSTOMER SUPPORT

Etekcity Corporation

1202 N. Miller St., Suite A
Anaheim, CA 92806

Email: support@etekcity.com

Toll-Free: (855) 686-3835

SUPPORT HOURS

Mon-Fri, 9:00 am-5:00 pm PST/PDT

**Please have your order invoice and order ID ready before contacting Customer Support.*



Connect with us @Etekcity



