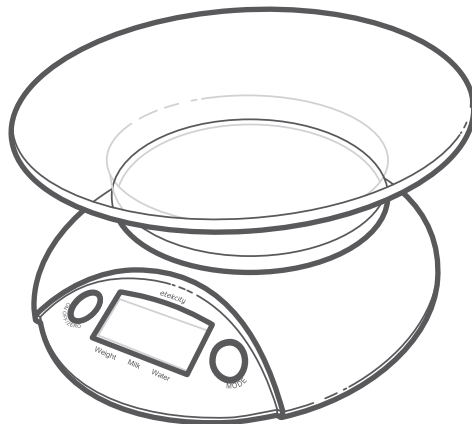


# etekcity®

## Digital Kitchen Scale

Model: EK3551

**User Manual**



**Thank you** for purchasing the **Digital Kitchen Scale** by Etekcity.

If you have any questions or concerns, please reach out to our helpful Customer Support Team at **[support@etekcity.com](mailto:support@etekcity.com)**. We hope you enjoy your new kitchen scale!

## Table of Contents

Package Contents	<b>3</b>
Specifications	<b>3</b>
Important Safety Information	<b>4</b>
Function Diagram	<b>5</b>
Using Your Scale	<b>7</b>
Maintenance	<b>10</b>
Troubleshooting	<b>11</b>
Warranty Information	<b>12</b>
Customer Support	<b>13</b>

## Package Contents

1 x Digital Kitchen Scale
1 x Plastic Bowl
2 x 1.5V AAA Batteries (Pre-Installed)
1 x Quick Start Guide

## Specifications

<b>Weight Capacity</b>	176 oz / 11 lb / 5000 g / 5000 mL
<b>Increments</b>	0.1 oz / 1 g / 1 mL
<b>Weight Units</b>	oz / lb:oz / fl'oz (water/milk) / g / mL (water/milk)
<b>Auto-Off</b>	120 seconds
<b>Battery</b>	2 x 1.5V AAA batteries (pre-installed)

# READ AND SAVE THESE INSTRUCTIONS

## Safety Information

To avoid damage to this scale, please read and follow all instructions and safety guidelines in this manual.

### Scale

- **Do not** exceed the 11 lb / 5000 g weight capacity, as this will damage the scale. An error indicator will appear on the LCD display if the limit is exceeded.
- **Do not** immerse the scale in water or any liquid. If liquid is spilled on the digital display or buttons, immediately wipe the scale dry with a soft cloth to avoid internal damage.
- Handle with care. This scale is not intended for commercial or heavy-duty use.
- Keep the scale in a cool, dry place.

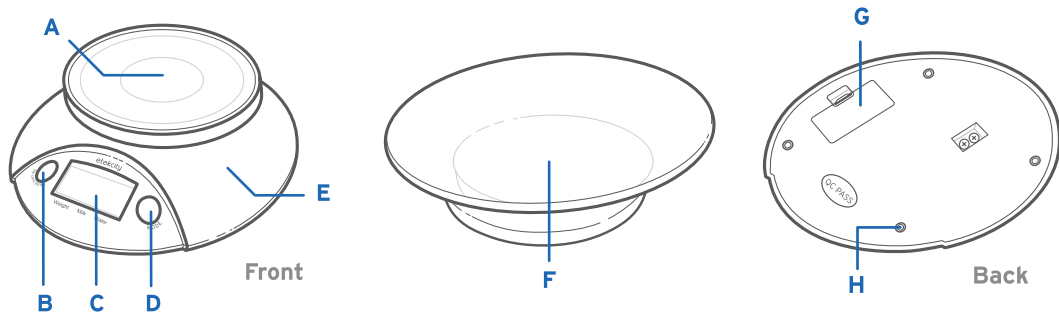
Avoid exposure to damp environments or extreme temperatures.

- Household use **only**.

### Batteries

- **Do not** mix new and old batteries.
- If the low battery indicator (“Lo”) appears on the display, replace the batteries.
- If the scale is not in use for an extended period of time, remove the batteries to conserve battery life and extend the lifetime of the scale.

# Function Diagram

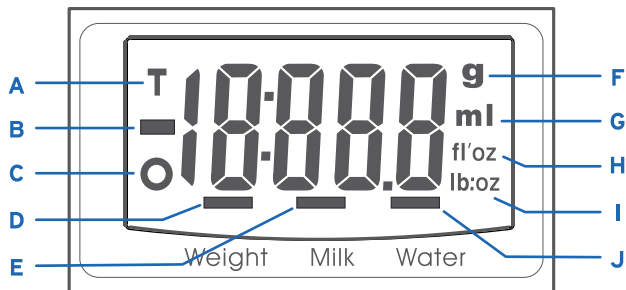


- A.** Weighing Surface
- B.** On/Off/Zero Button
- C.** LCD Screen
- D.** Mode Button

- E.** Digital Scale
- F.** Bowl
- G.** Battery Compartment
- H.** Anti-Skid Pads

## LCD Screen

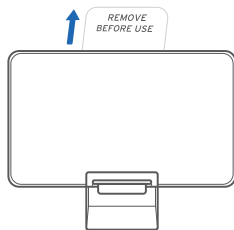
- A. Tare Function Active
- B. Negative Weight Value
- C. Zero Weight
- D. Weight Mode
- E. Milk Volume Mode
- F. Grams
- G. Milliliters
- H. Fluid Ounces
- I. Pounds & Ounces
- J. Water Volume Mode



# Using Your Scale

## Before First Use

Remove the plastic insulator from the battery compartment on the bottom of the scale. *[Figure 1.1]*



*Figure 1.1*

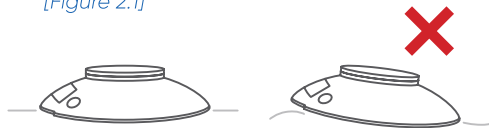
## Switching Weight Units

To switch between metric units (g, mL) and imperial units (oz, lb:oz, fl'oz), turn on the scale, then press the **Mode** button.

Note: For accurate results, place the scale on a hard, dry, flat surface, and keep the scale away from dirt, dust, vibrations, wind, air currents, and electromagnetic interference.

## Measurement

1. Place the scale on a hard, flat surface. *[Figure 2.1]*



*Figure 2.1*

## Operation (cont.)

2. Press **ON/OFF** to turn on the scale. Make sure the scale shows "0". Press **Mode** to select your desired measuring unit.
  - a. **Weight:** Choose between grams ("g"), ounces ("oz"), or both pounds and ounces ("lb:oz").
  - b. **Milk / Water:** Scale measures in milliliters ("ml") and fluid ounces ("fl'oz").

### Note:

- *If you're using the bowl or another container to hold the items or liquid you're measuring, first place the empty container on the scale. Press **ZERO** to tare the container's weight (see **Zero/Tare Function**, page 9).*
- *Milk Mode accounts for the higher density of milk to provide a more accurate reading when measuring milk for recipes.*

3. Place your item on the scale.
4. Wait for the weight on the display to stabilize.

5. When you are finished weighing your items, press **ON/OFF** to turn off the scale.

### Note:

- *To reset the scale, remove all weight from the platform and press **ZERO**.*
- *To conserve battery power, the scale will automatically turn off after 2 minutes of inactivity.*



## Zero/Tare Function

Whenever you measure liquid or other items inside the included bowl, you can use the zero/tare function to remove the bowl's weight from the final measurement. You can also use other containers in place of the bowl.

1. Place the scale on a flat surface, then press **ON/OFF** to turn on the scale.
2. Place the bowl or container onto the weighing surface.
3. Press **ZERO**. The screen will display "0" again. *[Figure 3.1]*
4. Place liquid or items in the bowl. The scale will measure the contents without including the weight of the bowl. *[Figure 3.2]*

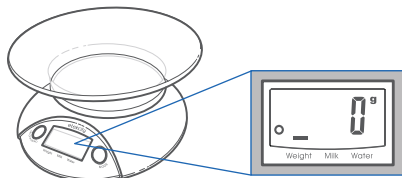


Figure 3.1

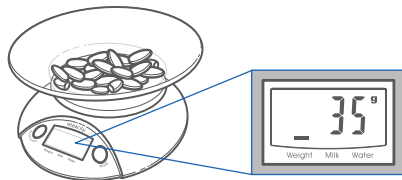


Figure 3.2

# Maintenance

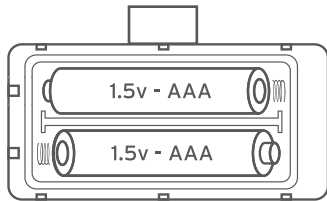
## General Cleaning

- Clean the scale with a clean damp cloth, then dry immediately after with a dry cloth. **Do not** immerse the scale in water or use abrasive cleaning agents.
- All plastic parts should be cleaned immediately after coming into contact with fats, spices, vinegar, and strongly flavored/colored foods. Avoid contact with acidic foods like citrus fruits.

## Replacing the Battery

1. If the scale is on, press **ON/OFF** to turn it off.
2. Open the battery compartment on the bottom of the scale.
3. Remove the old batteries.
4. Install 2 new 1.5V AAA batteries under the correct polarity. *[Figure 4.1]*



Replace the cover for the battery compartment.



*Figure 4.1*

# Troubleshooting

## Warning Indicators

 The image shows the characters 'Lo' in a digital font, enclosed in a rounded rectangular border. This represents a low battery warning.	<p>Battery power is low. Install 2 new 1.5V AAA batteries.</p>
 The image shows the characters 'Err' in a digital font, enclosed in a rounded rectangular border. This represents an error or weight capacity exceeded warning.	<p>Maximum weight capacity has been exceeded. Remove items from scale to avoid damage.</p>

## Federal Communication Commission Interference Statement – Part 15

This device complies with Part 15 of the FCC Rules. Operation is subject to the following two conditions:

1. This device may not cause harmful interference, and
2. This device must accept any interference received, including interference that may cause undesired operation.

NOTE: This equipment has been tested and found to comply with the limits for a Class B digital device, pursuant to Part 15 of the FCC Rules. These limits are designed to provide reasonable protection against harmful interference in a residential installation. This equipment generates, uses and can radiate radio frequency energy and, if not installed and used in accordance with the instructions, may cause harmful interference to radio communications. However, there is no guarantee that interference will not occur in a particular installation. If this equipment does cause harmful interference to radio or television reception, which can be determined by turning the equipment off and on, the user is encouraged to try to correct the interference by one or more of the following measures:

- Reorient or relocate the receiving antenna.
- Increase the separation between the equipment and receiver.
- Connect the equipment into an outlet on a circuit different from that to which the receiver is connected.
- Consult the dealer or an experienced radio/TV technician for help.

**FCC Caution:** Any changes or modifications not expressly approved by the party responsible for compliance could void the user's authority to operate this equipment.

## FCC SDOC Supplier's Declaration Of Conformity

Etekcitey Corporation hereby declares that this equipment is in compliance with the FCC Part 15 Subpart B. The declaration of conformity may be consulted in the support section of our website, accessible from [www.etekcity.com](http://www.etekcity.com)

# Warranty Information

<b>Product Name</b>	Digital Kitchen Scale
<b>Model</b>	EK3551
For your own reference, we strongly recommend that you record your order ID and date of purchase.	
<b>Order ID</b>	
<b>Date of Purchase</b>	

## Etekcitiy Limited Product Warranty

Register your products at <https://warranty.etekcity.com/warranty> to stay up to date with important product information such as product updates, limited warranties, usage and maintenance recommendations, and notifications concerning safety warnings or product recalls. Registration is not required to claim your limited warranty.

## Two (2) Year Limited Consumer Product Warranty

Etekcitiy Corporation ("Etekcitiy") warrants that the product shall be free from defects in material and workmanship for a period **of 2 years from the date of original purchase** ("Limited Warranty Period"), provided the product was used in accordance with its use and care instructions (e.g. in the intended environment and under normal circumstances).

## Your Limited Warranty Benefits

During the Limited Warranty Period and subject to this limited Warranty Policy, Etekcitiy will, in its sole and exclusive discretion, either (i) refund the purchase price if the purchase was made directly from the online Etekcitiy store, (ii) repair any defects in material or workmanship, (iii) replace the product with another product of equal or greater value, or (iv) provide store credit in the amount of the purchase price.

## Who Is Covered?

This limited warranty extends only to the original consumer purchaser of the product and is not transferable to any subsequent owner of the product, regardless of whether the product transferred ownership during the specified term of the limited warranty. The original consumer purchaser must provide verification of the defect or malfunction and proof of the date of purchase to claim the Limited Warranty Benefits.

## Be Aware of Unauthorized Dealers or Sellers

This limited warranty does not extend to products purchased from unauthorized dealers or sellers. Etekcitiy's limited warranty only extends to products purchased from authorized dealers or sellers that are subject to Etekcitiy's quality controls and have agreed to follow its quality controls. Please be aware, products purchased from an unauthorized website or dealer may be counterfeit, used, defective, or may not be designed for use in your country. You can protect yourself and your products by making sure you only purchase from Etekcitiy or its authorized dealers.

If you have any questions about a specific seller, or if you think you may have purchased your product from an unauthorized seller, please contact our Customer Support via [support@etekcity.com](mailto:support@etekcity.com).

## What's Not Covered?

- Normal wear and tear, including parts that might wear out over time (e.g. batteries, filters, cleaning brush, essential oil pads, etc.).
- If the proof-of-purchase has been altered in any way or is made illegible.
- If the model number, serial number or production date code on the product has been altered, removed or made illegible.
- If the product has been modified from its original condition.
- If the product has not been used in accordance with directions and instructions in the user manual.
- Damages caused by connecting peripherals, additional equipment or accessories other than those recommended in the user manual.

- Damages or defects caused by accident, abuse, misuse, or improper or inadequate maintenance.
- Damages or defects caused by service or repair of the product performed by an unauthorized service provider or by anyone other than Etekcity.
- Damages or defects occurring during commercial use, rental use, or any use for which the product is not intended.
- If the unit has been damaged, including but not limited to damage by animals, lightning, abnormal voltage, fire, natural disaster, transportation, dishwasher, or water (unless the user manual expressly states that the product is dishwasher-safe).
- Incidental and consequential damages.
- Damages or defects exceeding the cost of the product.

#### **Claiming Your Limited Warranty Service in 5 Simple Steps:**

1. Make sure your product is within the specified limited warranty period.
2. Make sure you have a copy of the invoice and order ID or proof-of-purchase.
3. Make sure you have your product. DO NOT dispose of your product before contacting us.
4. Contact our Customer Support team via support@etekcity.com.
5. Once our Customer Support team has approved your request, please return the product with a copy of the invoice and order ID.

#### **Sole and Exclusive Remedy**

THE FOREGOING LIMITED WARRANTY CONSTITUTES ETEKCITY CORPORATION'S EXCLUSIVE LIABILITY, AND YOUR SOLE AND EXCLUSIVE REMEDY, FOR ANY BREACH OF ANY WARRANTY OR OTHER NONCONFORMITY OF THE PRODUCT COVERED BY THIS LIMITED PRODUCT WARRANTY STATEMENT. THIS LIMITED WARRANTY IS EXCLUSIVE, AND IN LIEU OF ALL OTHER WARRANTIES. NO EMPLOYEE OF ETEKCITY CORPORATION OR ANY OTHER PARTY IS AUTHORIZED TO MAKE ANY WARRANTY

IN ADDITION TO THE LIMITED WARRANTY IN THIS LIMITED PRODUCT WARRANTY STATEMENT.

#### **Disclaimer of Limited Warranties**

TO THE FULLEST EXTENT PROVIDED BY APPLICABLE LAW, EXCEPT AS WARRANTED IN THIS LIMITED PRODUCT WARRANTY POLICY, ETEKCITY CORPORATION PROVIDES THE PRODUCTS YOU PURCHASE FROM ETEKCITY CORPORATION "AS IS" AND ETEKCITY CORPORATION HEREBY DISCLAIMS ALL WARRANTIES OF ANY KIND, WHETHER EXPRESS OR IMPLIED, STATUTORY, OR OTHERWISE, INCLUDING BUT NOT LIMITED TO ANY WARRANTIES OF MERCHANTABILITY, NON-INFRINGEMENT, AND FITNESS FOR PARTICULAR PURPOSE.

#### **Limitations of Liability**

TO THE FULLEST EXTENT PROVIDED BY APPLICABLE LAW, IN NO EVENT WILL ETEKCITY CORPORATION, ITS AFFILIATES, OR THEIR LICENSORS, SERVICE PROVIDERS, EMPLOYEES, AGENTS, OFFICERS, OR DIRECTORS BE LIABLE FOR: (A) DAMAGES OF ANY KIND ARISING OUT OF OR IN CONNECTION WITH PRODUCTS PURCHASED FROM ETEKCITY CORPORATION IN EXCESS OF THE PURCHASE PRICE PAID BY THE PURCHASER FOR SUCH PRODUCTS, OR

(B) INDIRECT, SPECIAL, INCIDENTAL, CONSEQUENTIAL, OR PUNITIVE DAMAGES EVEN IF ETEKCITY CORPORATION OR ONE OF ITS SUPPLIERS HAS BEEN ADVISED OF THE POSSIBILITY OR LIKELIHOOD OF SUCH DAMAGES, AND REGARDLESS OF WHETHER CAUSED BY TORT (INCLUDING NEGLIGENCE), BREACH OF CONTRACT, OR OTHERWISE. OUR LIABILITY SHALL UNDER NO CIRCUMSTANCES EXCEED THE ACTUAL AMOUNT PAID BY YOU FOR THE DEFECTIVE PRODUCT, NOR SHALL WE UNDER ANY CIRCUMSTANCES BE LIABLE FOR ANY CONSEQUENTIAL, INCIDENTAL, SPECIAL OR PUNITIVE DAMAGES OR LOSSES, WHETHER DIRECT OR INDIRECT, EXCEPT AS COVERED BY THIS LIMITED PRODUCT WARRANTY STATEMENT, ETEKCITY CORPORATION SHALL NOT BE LIABLE FOR COSTS ASSOCIATED WITH THE REPLACEMENT OR REPAIR OF PRODUCTS PURCHASED FROM IT, INCLUDING, BUT NOT LIMITED TO, LABOR, INSTALLATION, OR OTHER COSTS INCURRED BY THE USER AND, IN PARTICULAR, ANY COSTS RELATING TO THE REMOVAL OR REPLACEMENT OF ANY PRODUCT.

#### **Other Rights You May Have**

SOME JURISDICTIONS DO NOT ALLOW FOR: (1) EXCLUSION OF IMPLIED WARRANTIES; (2) LIMITATION ON THE DURATION OF IMPLIED WARRANTIES; AND/OR (3) EXCLUSION OR LIMITATION OF INCIDENTAL OR CONSEQUENTIAL

DAMAGES; SO THE DISCLAIMERS IN THIS POLICY MAY NOT APPLY TO YOU. IN THESE JURISDICTIONS YOU HAVE ONLY THE IMPLIED WARRANTIES THAT ARE EXPRESSLY REQUIRED TO BE PROVIDED IN ACCORDANCE WITH APPLICABLE LAW. THE LIMITATIONS OF WARRANTIES, LIABILITY, AND REMEDIES APPLY TO THE MAXIMUM EXTENT PERMITTED BY LAW.

ALTHOUGH THIS LIMITED WARRANTY GIVES YOU SPECIFIC LEGAL RIGHTS, YOU MAY HAVE OTHER RIGHTS IN YOUR JURISDICTION. THIS STATEMENT OF LIMITED WARRANTY IS SUBJECT TO APPLICABLE LAWS THAT APPLY TO YOU AND THE PRODUCT. PLEASE REVIEW THE LAWS IN YOUR JURISDICTION TO UNDERSTAND YOUR RIGHTS FULLY.

#### **Changes To This Policy**

We may change the availability of this limited warranty at our discretion, but any changes will not be retroactive.

This warranty is made by:

Etekcitey Corporation  
1775 Flight Way, Suite 150  
Tustin, CA 92782  
USA

## Customer Support

If you have any questions or concerns about your new product, please contact our helpful Customer Support Team.

#### **Etekcitey Corporation**

1775 Flight Way, Suite 150  
Tustin, CA 92782  
USA

**Email:** [support@etekcity.com](mailto:support@etekcity.com)

**Toll-Free:** 1-855-686-3835

#### **Support Hours**

Mon–Fri, 9:00 am–5:00 pm PST/PDT

*\*Please have your order invoice and order ID ready before contacting Customer Support.*

**etekcity**  
by VeSync

01.01\_D\_21H10\_us